

- Leading Independent Agents
- 20 Years Experience in Cambridge
- Professional and Personal Service from the perspective that matters.....Yours!



## 66 Flamsteed Close , Cambridge, CB1 3FD £2,100 PCM

This is a fully self contained contemporary HOUSE, not a duplex flat more common to this development

2 x double bedrooms and wood flooring throughout living areas with tiled bathroom/cloakroom. Near all city amenities, train station and major road links. Walking distance all of the former. Offered unfurnished, with integrated appliances, private decked patio to first floor and fenced front outside area with large bike storage bin. This is a securely gated community comprising flats and houses, sharing communal gardens and with allocated undercroft parking for 1 vehicle. UNFURNISHED.

This house offers more privacy and quieter living than the neighbouring duplex flats.

### Details:

Entry is directly into the large open plan reception area which incorporates the integrated kitchen area with granite worktops and integrated appliances - the staircase with glass side guard, leads up from this also . Plenty of natural light is provided by the rear window and misted glass front door/panels to side. There is a cloakroom with WC and range of integrated cupboards which also house the modern gas boiler and washer/drier .

Upstairs: Master bedroom of good size with wooden decked patio area accessed via glass door. Built in wardrobe and door directly to family shower room, partially tiled with walk in shower, heated towel rail, wash handbasin unit and WC. The shower room also has a second doorway providing access from hallway.  
2nd double bedroom with storage cupboard.

Outside to front : Private fenced area with large bike storage bin .

### Viewing

Please contact our Admiral Estates Office on 01223 891227 if you wish to arrange a viewing appointment for this property or require further information.





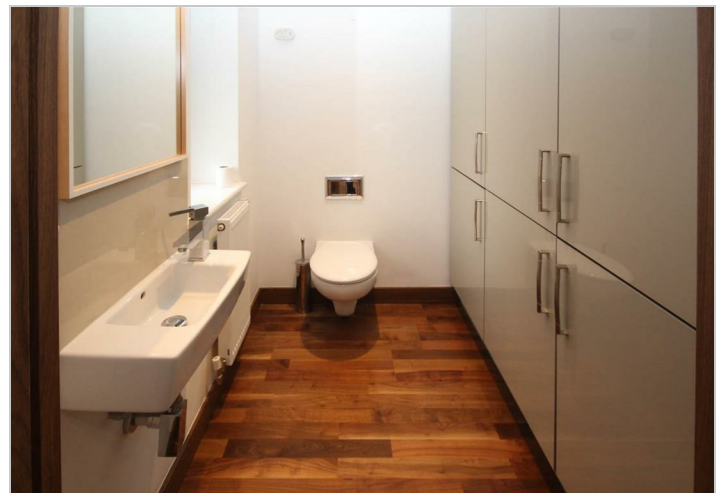
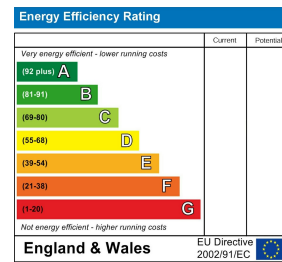
## Floor Plan



## Area Map



## Energy Efficiency Graph



These particulars, whilst believed to be accurate are set out as a general outline only for guidance and do not constitute any part of an offer or contract. Intending purchasers should not rely on them as statements of representation of fact, but must satisfy themselves by inspection or otherwise as to their accuracy. No person in this firm's employment has the authority to make or give any representation or warranty in respect of the property.