

- Leading Independent Agents
- 20 Years Experience in Cambridge
- Professional and Personal Service from the perspective that matters.....Yours!



23D Greenside

Waterbeach, Cambs, CB25 9HW

£1,095 PCM

1 Bed Bungalow. Newly painted.

EASY / QUICK ACCESS TO A10/M11/A14 CAMBRIDGE SCIENCE PARK/ CAMBRIDGE INNOVATION PARK / CAMBRIDGE NORTH STATION
4 MINUTES BY TRAIN TO CAMBRIDGE NORTH/ 8 MINS TO CAMBRIDGE CENTRAL
REGULAR BUS SERVICE TO CAMBRIDGE
SUIT PROFESSIONAL SINGLE PERSON OR PROFESSIONAL COUPLE.

Fully furnished (including crockery/cutlery/pans etc.) Quiet location. All utilities separately metered. Off street parking

Situated in the centre of Waterbeach, just off the Village Green.
Open plan kitchen / living area, double bedroom, Bathroom with shower over bath. Kitchen features a gas hob and electric oven.
The property has 3 raised flower beds immediately in front which can be planted.

One off-road parking place is provided in a communal parking area and there are communal bins for waste, recyclables etc in this area.

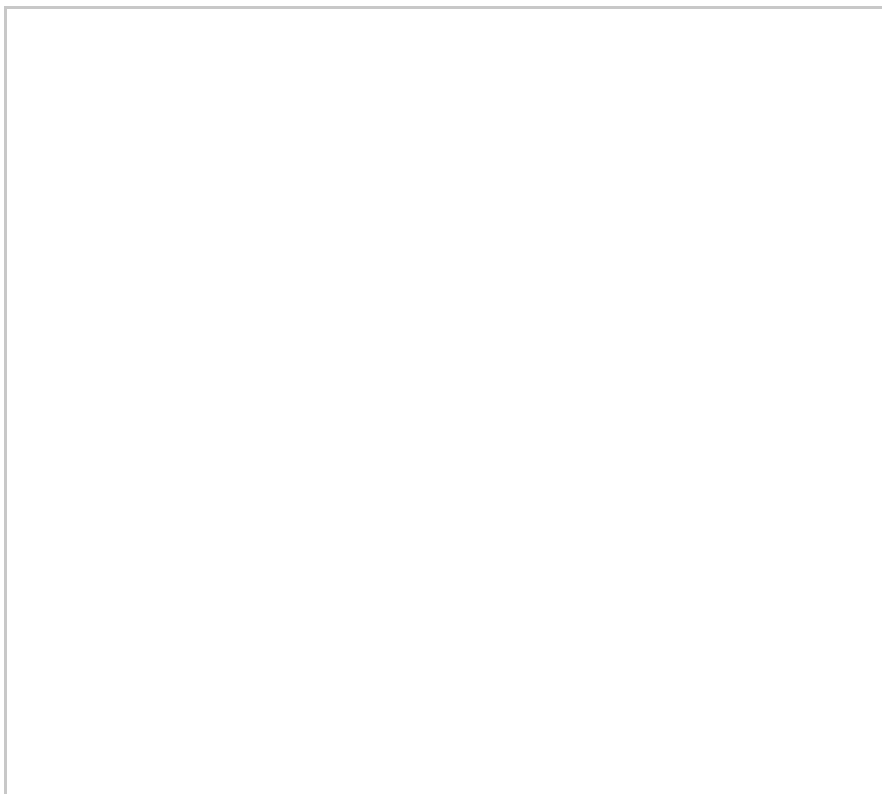
Waterbeach is located to the north of Cambridge, offering easy access to the A10, A14 and Cambridge Science and Business Parks. Local facilities in the village include numerous shops, post office, small independent library, three public houses, restaurant, doctor's surgery and a social club.

Viewing

Please contact our Admiral Estates Office on 01223 891227 if you wish to arrange a viewing appointment for this property or require further information.



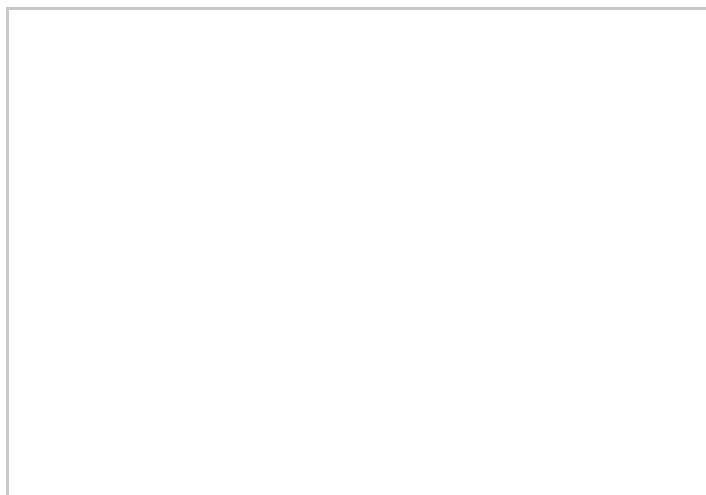
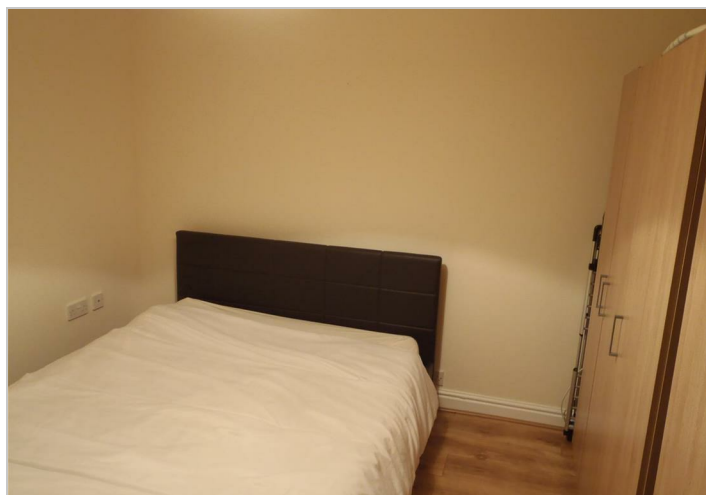
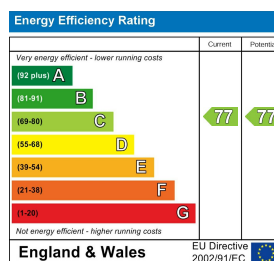
Floor Plan



Area Map



Energy Efficiency Graph



These particulars, whilst believed to be accurate are set out as a general outline only for guidance and do not constitute any part of an offer or contract. Intending purchasers should not rely on them as statements of representation of fact, but must satisfy themselves by inspection or otherwise as to their accuracy. No person in this firm's employment has the authority to make or give any representation or warranty in respect of the property.