

- Leading Independent Agents
- 20 Years Experience in Cambridge
- Professional and Personal Service from the perspective that matters.....Yours!



Lovell Lodge 365 Milton Road , Cambridge, CB4 1SR £1,300 Per Month

High spec, well equipped, modern first floor studio apartment with balcony. Part of small recent development on Milton Road, North Cambridge. Good residential area near Cambridge Science Park and nearby guided busway stop With easy access to Cambridge North mainline train station, A14, M11, and local shops. Cambridge City Centre easily accessible by bus or bike.

Details: Communal secure entrance hall with stairs to first floor.

Entrance door leading to hallway/studio/bathroom and large storage cupboard with electric boiler, hot water tank, air purification unit and storage shelving unit.

Shuller kitchen units incorporating stainless steel sink unit, ceramic hob with built under electric oven with extractor hood fan over. Full size dishwasher and washer/dryer. Larder fridge with freezing compartment.

Good size bathroom with white suite and overhead deluge shower over bath. Partially tiled walls/wood panelling.

Parking available on Lovell Road to one side of the block.

Would suit professional single or couple or mature student only.

Available to let immediately.

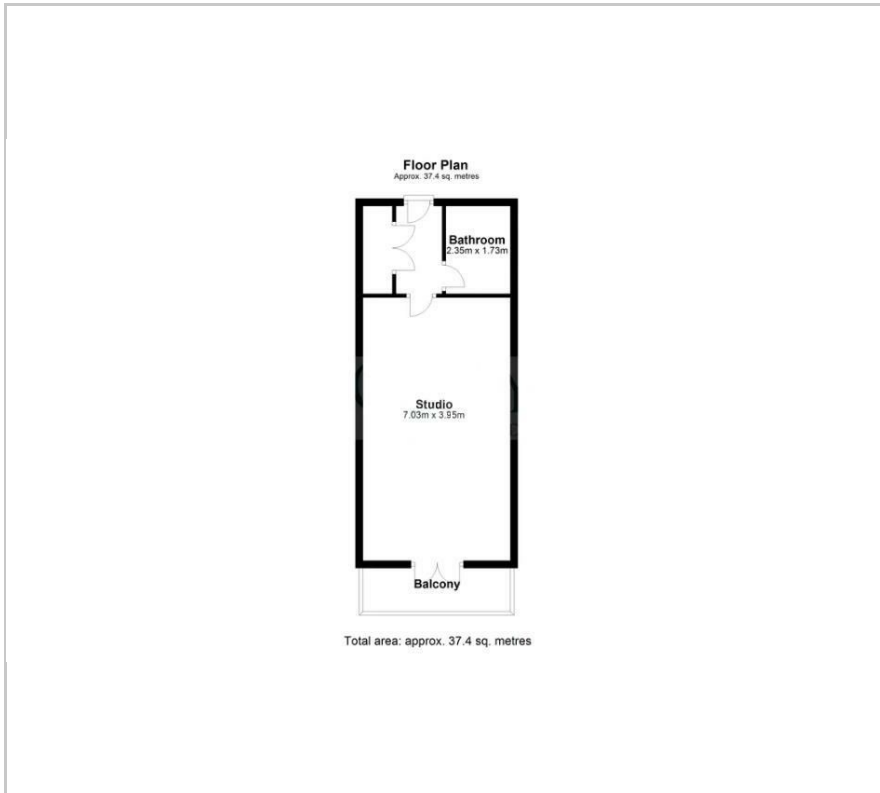
Early viewing recommended - please call us on 01223 891227.

Viewing

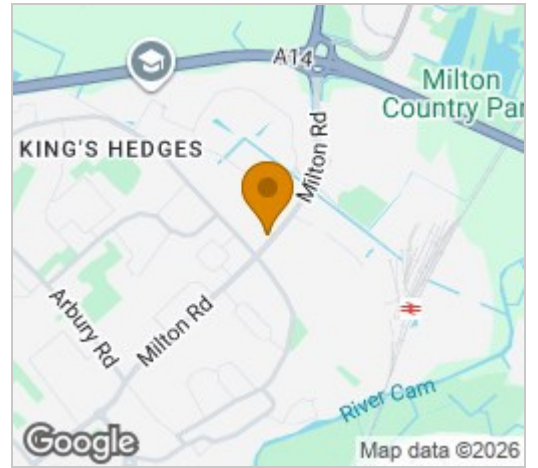
Please contact our Admiral Estates Office on 01223 891227 if you wish to arrange a viewing appointment for this property or require further information.



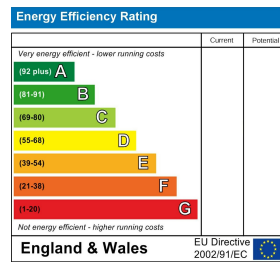
Floor Plan



Area Map



Energy Efficiency Graph



These particulars, whilst believed to be accurate are set out as a general outline only for guidance and do not constitute any part of an offer or contract. Intending purchasers should not rely on them as statements of representation of fact, but must satisfy themselves by inspection or otherwise as to their accuracy. No person in this firm's employment has the authority to make or give any representation or warranty in respect of the property.